

Gaining Apex Coaching Centre

(Where Toppers make..... Toppers)

Compiled By: Dapinderjeet Singh

Important and NCERT Solutions- Control & Coordination

- 1) What is the difference between a reflex action and walking?
- 2) What happens at the synapse between two neurons?
- 3) Which part of the brain maintains posture and equilibrium of the body?
- 4) What is the role of the brain in reflex action?
- 5) What are plant hormones?
- 6) Different types of phytohormones are – auxins, gibberellins, cytokinins, abscisic acid and ethylene.
- 7) How is the movement of leaves of the sensitive plant different from the movement of a shoot towards light?
- 8) Give an example of a plant hormone that promotes growth.
- 9) How do auxins promote the growth of a tendril around a support?
- 10) Design an experiment to demonstrate hydrotropism.
- 11) How does chemical coordination take place in animals?
- 12) Why is the use of iodised salt advisable?
- 13) How does our body respond when adrenaline is secreted into the blood?
- 14) Why are some patients of diabetes treated by giving injections of insulin?
- 15) What is the function of receptors in our body? Think of situations where receptors do not work properly. What problems are likely to arise?
- 16) Draw the structure of a neuron and explain its function.
- 17) How does phototropism occur in plants?
- 18) Which signals will get disrupted in case of a spinal cord injury?
- 19) What is the need for a system of control and coordination in an organism?
- 20) How are involuntary actions and reflex actions different from each other?
- 21) What is the difference between the manner in which movement takes place in a sensitive plant and the movement in our legs?
- 22) What type of plant movement is seen in the diagram of coiling of tendril?

Or

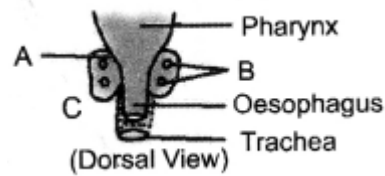
How do auxins promote the growth of a tendril around a support? Describe in brief.

Gaining Apex Coaching Centre

(Where Toppers make..... Toppers)

Compiled By: Dapinderjeet Singh

Identify and label the parts shown as A and B in the accompanying figure.



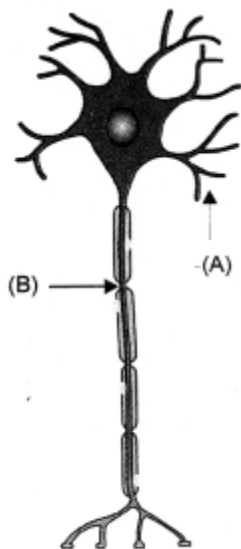
23) What are the hormones involved in providing milk to the suckling infant ?

24) How does pancreas control glucose level of blood ?

25) What is dormin?

26) a)

1. Name the parts labelled A and B in the neuron drawn above.
2. Which part acquires the information in the neuron ?



3. Through which part does the information travel ?
4. In what form does this information travel ?
5. Where is the impulse converted into a chemical signal for onward transmission ?

(b) Name the hormone secreted by thyroid. What is the function ?

(c) Why is the use of iodised salt advisable ?

27)(a) What are plant hormones? Give one example each of a plant hormone that

1. promotes growth
2. inhibits growth.
3. promotes cell division

Gaining Apex Coaching Centre

(Where Toppers make..... Toppers)

Compiled By: Dapinderjeet Singh

4. promotes the growth of a tendril around a support.

(b) Name the parts labelled A, B and C in the diagram given below. Write one function of each ?

